

Webinar

**Welcome To
The Future**

Webi

**BI4.2 SP06
And Beyond**

 **360 Suite**
BUSINESS OBJECTS
MANAGEMENT SOLUTIONS





#1 Reporting Tool in BI Market
Cover 70% of the FORTUNE 100
20,000 Customers Use it in Prod



Ability to do Complex
and Heavy Reporting



Self-service tool:
interact with existing Webi documents
or create them yourself



#1 tool for request of improvements
in SAP Ideas Place



Speaker

A faint, light blue world map serves as a background for the text. It features several small, colored triangles (blue, yellow, green) placed over various continents, likely indicating global locations or offices.

Gregory Botticchio

Product Manager SAP BusinessObjects Webi

Business Objects + 360Suite = Maximize your Investment

★ Why We Win?

- Cut operational costs
- Mitigate risks (FISMA, SOX, HIPAA, GDPR, etc.)
- Maintain a clean/efficient/secured environment
- Reduce migration/upgrade costs (4.2, SP, Cloud, etc.)
- Cross charging
- Measure real BI usage
- Awesome services team:
 #[CustomerSuccess](#) is our DNA



SAP BusinessObjects Web Intelligence

Scope 4.2 SP06, roadmap

Gregory Botticchio, SAP
March, 2018

PUBLIC

SAP BusinessObjects Web Intelligence

For ad-hoc query and interactive reporting

Quickly build ad-hoc queries and interactive reports without a knowledge of SQL or the underlying data structure

Access to heterogeneous data sources

- Leverage semantic layer and common business terms
- Combine multiple data sources within a report

Flexibility and control

- Create new reports or modify existing reports
- Re-use shared report elements

Interactive and intuitive interface

- Use the organized toolbar, drag-and-drop features, and rich charting options
- Collaborate within the reports

Online and offline reporting

- Ask questions, analyze data, and identify trends no matter where you are (mobile, web, desktop)



SAP BusinessObjects Web Intelligence

- Web Intelligence Interactive Viewer
- WebI Designer enhancements
- Other Customer's Requests
- RESTful Web Service

Roadmap

Web Intelligence Interactive Viewer



Web Intelligence Interactive Viewer

Automatic Refresh

SAP Labs
Preview

- Only in Web Intelligence Interactive Viewer!
- Auto refresh mode: only for reading
- Define the refresh frequency
- Prompts need to be answered only the first time
- Data providers refreshed every XX minutes
- Use opendoc for a full screen display

Set Auto Refresh

Auto Refresh every: minutes

OK Cancel



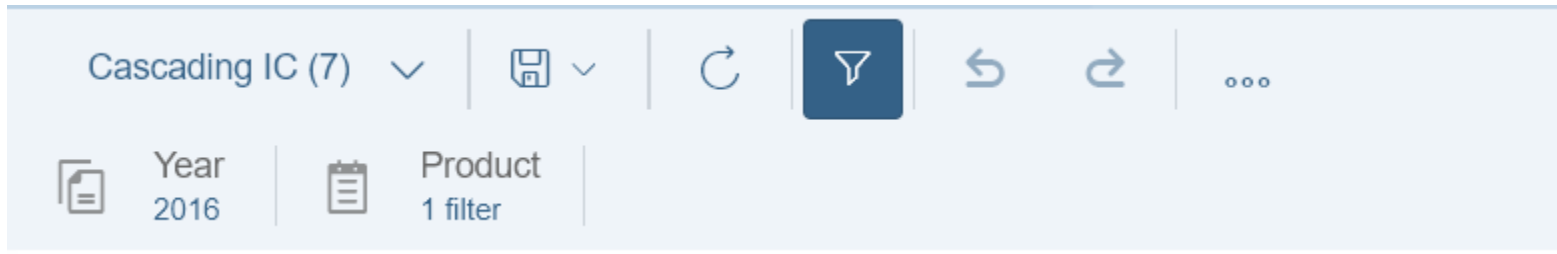
This is the current state of planning and may be changed by SAP at any time.

Web Intelligence Interactive Viewer

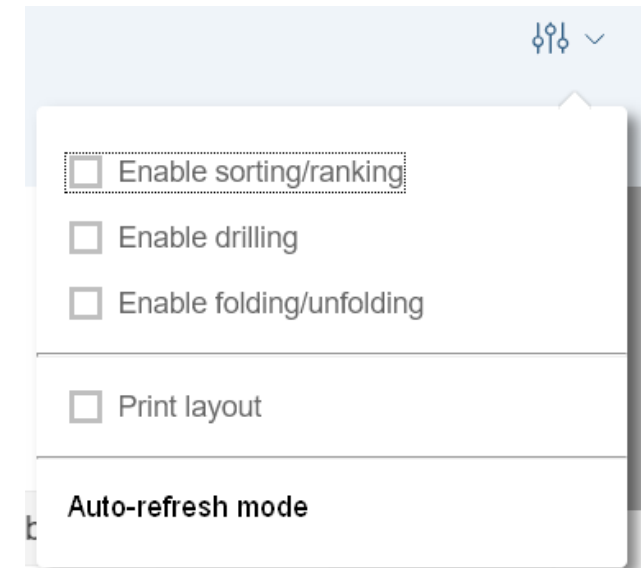
Filters Bar / Advanced Menu

SAP Labs
Preview

- Automatically open the **Filters** Bar when a filter has been set



- New **Advanced** menu
 - Enable / Disable sorting/ranking
 - Enable / Disable drill **(New!)**
 - Enable / Disable folding
 - Print layout
 - Auto-refresh **(New!)**



This is the current state of planning and may be changed by SAP at any time.

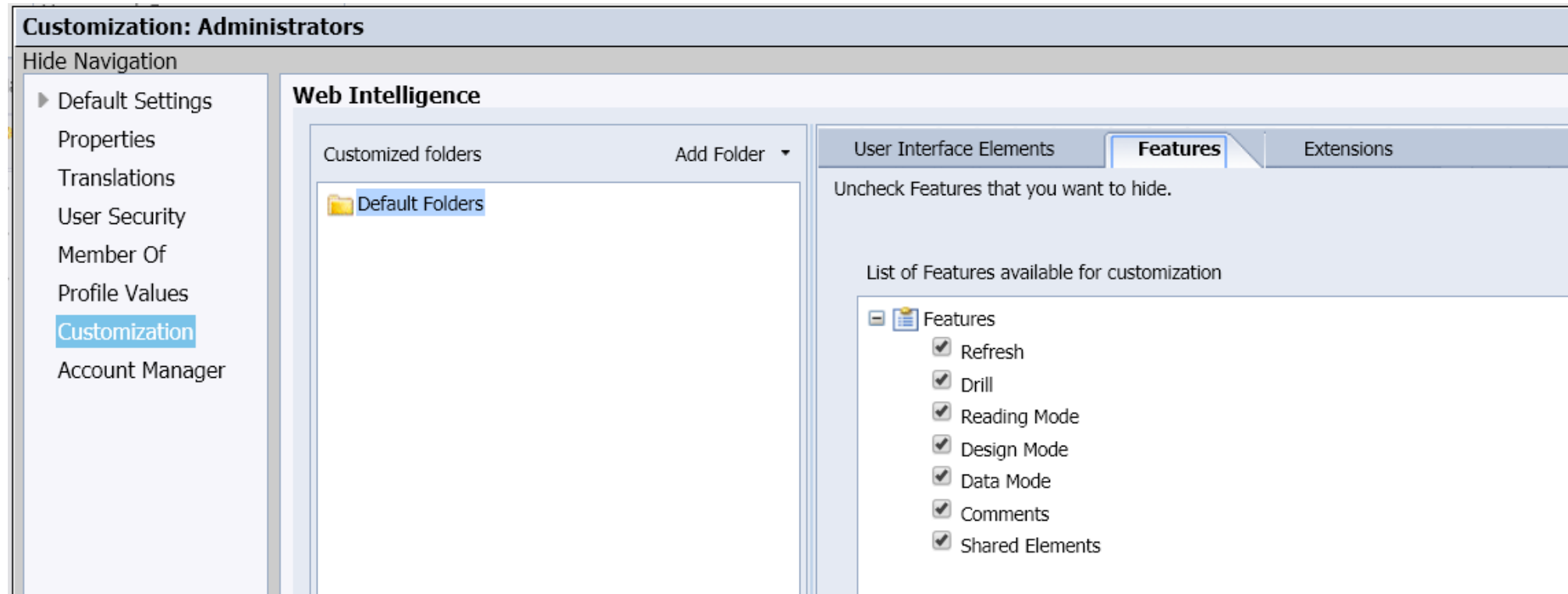
Web Intelligence Interactive Viewer

Support of Customization

SAP Labs
Preview

User Interface Customization:

- Hide unwanted features: Refresh, Comments...



This is the current state of planning and may be changed by SAP at any time.

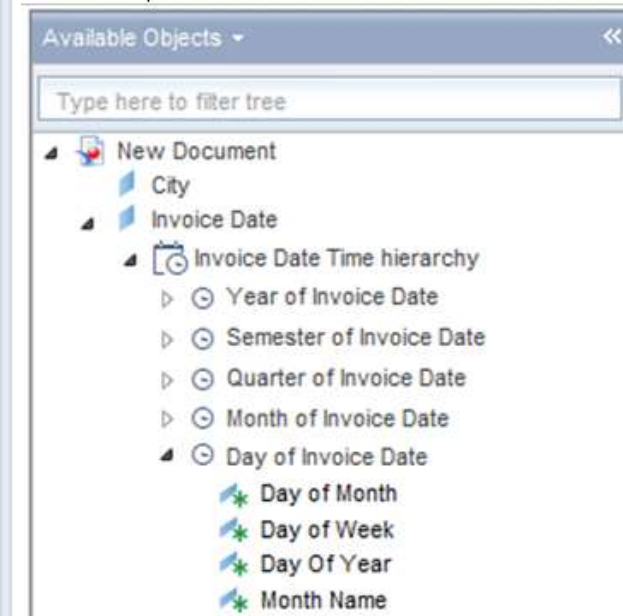
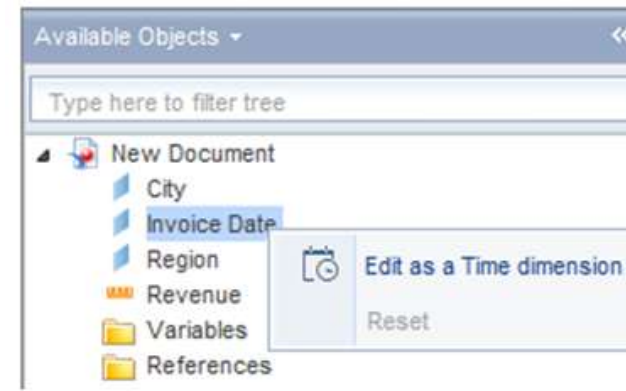
Web Intelligence Designer

Time Dimension

Enrich Web Intelligence Documents with Time Semantic

- Create a Time hierarchy out of data source dates
- Create tables and charts with chronological order
- Drill into the Time hierarchy
- Create a custom calendar, e.g.: fiscal year
- Use time-based report filters and input controls

SAP Labs
Preview



This is the current state of planning and may be changed by SAP at any time.

Web Intelligence Designer

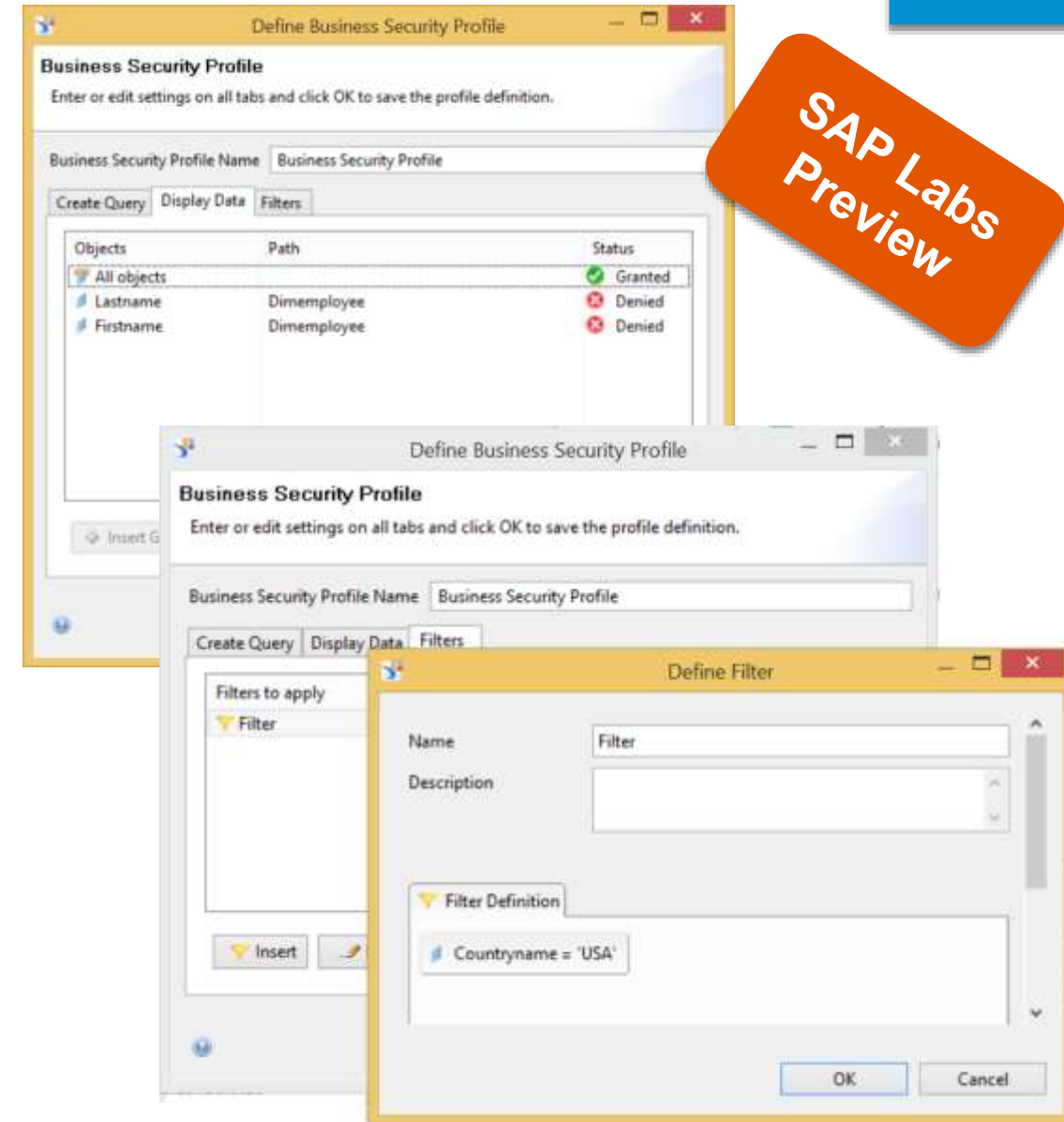
View-Time Security

Apply universe Business Security Profile

Filtering when opening document:

- No need to refresh the data to apply the profile filter when opening the document
- Offers the same result than a refresh-on-open but without the refresh action cost
- No query execution = performance gain!
- Only on relational UNX
- *Display Data*: Secure objects
- *Filters*: Filter rows

SAP Labs
Preview



This is the current state of planning and may be changed by SAP at any time.

Web Intelligence Designer

Intra-document linking

SAP Labs
Preview

Internal hyperlinks to any report within a document

- Create a document index or shortcuts to other reports within the document
- Based on JSP code:

```
"<a href="#" onclick=\"callImplementation([reportId:9]),  
'loadReport'); return false;\" style=  
\"color:inherit; text-decoration: none;\" title=\"Link to  
Report1 tooltip\">Link to Report1</a>"
```

The screenshot shows the 'Edit Hyperlink' dialog box with the 'Internal link' tab active. The 'Hyperlink label' is 'This is the visible label of the hyperlink'. Under 'Hyperlink properties', 'Report' is 'Document Report 1' and 'Focus on bloc' is 'None'. Under 'Customize the look and behavior of the hyperlink', the 'Tooltip' is 'openDocument Link tooltip'. The dialog has 'OK', 'Cancel', and 'Apply' buttons at the bottom.

This is the current state of planning and may be changed by SAP at any time.

Web Intelligence Designer

Open Document URL

SAP Labs
Preview

- Support for XLSX output: sOutputFormat=E
- Display document without UI control: sReportMode=Light
- Support for complex prompts (SAP HANA, SAP BW)

Syntax	Operator	Example
Arg1	Equal	IsM <i>PromptName</i> = France
!Arg1	Not Equal	IsM <i>PromptName</i> != Italy
Arg1-Arg2	Interval Between	IsM <i>PromptName</i> = Germany - Spain
!Arg1-Arg2	Not Between	IsM <i>PromptName</i> != Germany - Spain
>Arg	Greater than	IsM <i>PromptName</i> > Germany
<Arg	Lower than	IsM <i>PromptName</i> < Germany
>=Arg	Greater or equal to	IsM <i>PromptName</i> >= Germany
<=Arg	Lower or equal to	IsM <i>PromptName</i> <= Germany

Can be combined:

IsM *PromptName* = France; !Italy; !Spain; Canada-Germany; >Panama

Web Intelligence Designer

Refresh Options

Refreshable option to disable a query execution

Already available for XLS

Implemented in 4.2 SP6 for

- UNV/UNIX
- SAP Direct Access
- SAP HANA Direct Access
- FHSQL
- Text

SAP Labs
Preview

Query Properties

Name
Query 2

Universe
eFashion

Limits

- ☐ Max rows retrieved 90000
- ☐ Max retrieval time 300

Sample

- ☐ Sample result set 500
- ☐ Fixed

Data

- ☒ Refreshable
- ☒ Retrieve duplicate rows
- ☐ Retrieve empty rows
- ☐ Delete trailing blanks

Security

- ☒ Allow other users to edit all queries

Prompt order

Context

- ☒ Reset contexts on refresh

Clear Contexts

OK Cancel

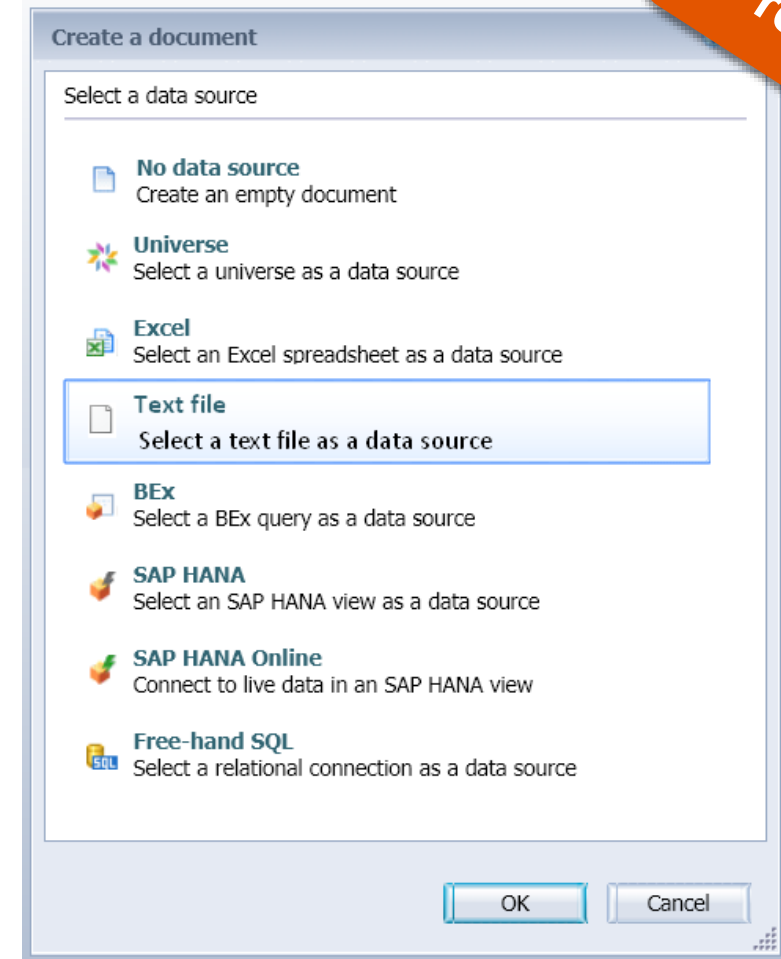
This is the current state of planning and may be changed by SAP at any time.

Web Intelligence Designer

TXT and CSV Data Providers

Support for TXT and CSV data sources (from CMS)
in the DHTML client

SAP Labs
Preview



This is the current state of planning and may be changed by SAP at any time.

Web Intelligence

Other Customer Requests

- Support for the PageInSection() Desktop Intelligence formula.
- Option to export PDF with or without bookmarks
- Automatically fill table break footers with measures
- Context support in scheduling

SAP Labs
Preview

The screenshot displays a Web Intelligence report with a table of sales data. Annotations highlight the use of the `PageInSection()` formula in different contexts:

- Page 4**: An annotation points to the page number field, labeled `"PageInSection(1)"`.
- Page 2 in page 4 of 2001 section**: An annotation points to the section header, labeled `"PageInSection(1)"`.
- Page 1 in page 4 of 2001 section**: An annotation points to the section header, labeled `"PageInSection(1)"`.
- PageInSection(2)**: An annotation points to a row in the table, labeled `"PageInSection(2)"`.

City	Lines	Sales revenue	Quantity sold
New York	Accessories	\$67,722	3,888
New York	City Skirts	\$11,651	62
New York	City Trousers	\$20,938	146
New York	Dresses	\$116,567	848
New York	Overcoats	\$33,335	166
New York	Shirt Waist	\$190,324	1,150
New York	Sweaters	\$92,735	600
New York	Sweat-T-Shirts	\$476,724	2,826
New York	Trousers	\$30,873	186

This is the current state of planning and may be changed by SAP at any time.

Web Intelligence RESTful Web Services

New APIs

An orange, rounded rectangular badge with a slight 3D effect, tilted at an angle. It contains the text "SAP Labs Preview" in white, bold, sans-serif font.

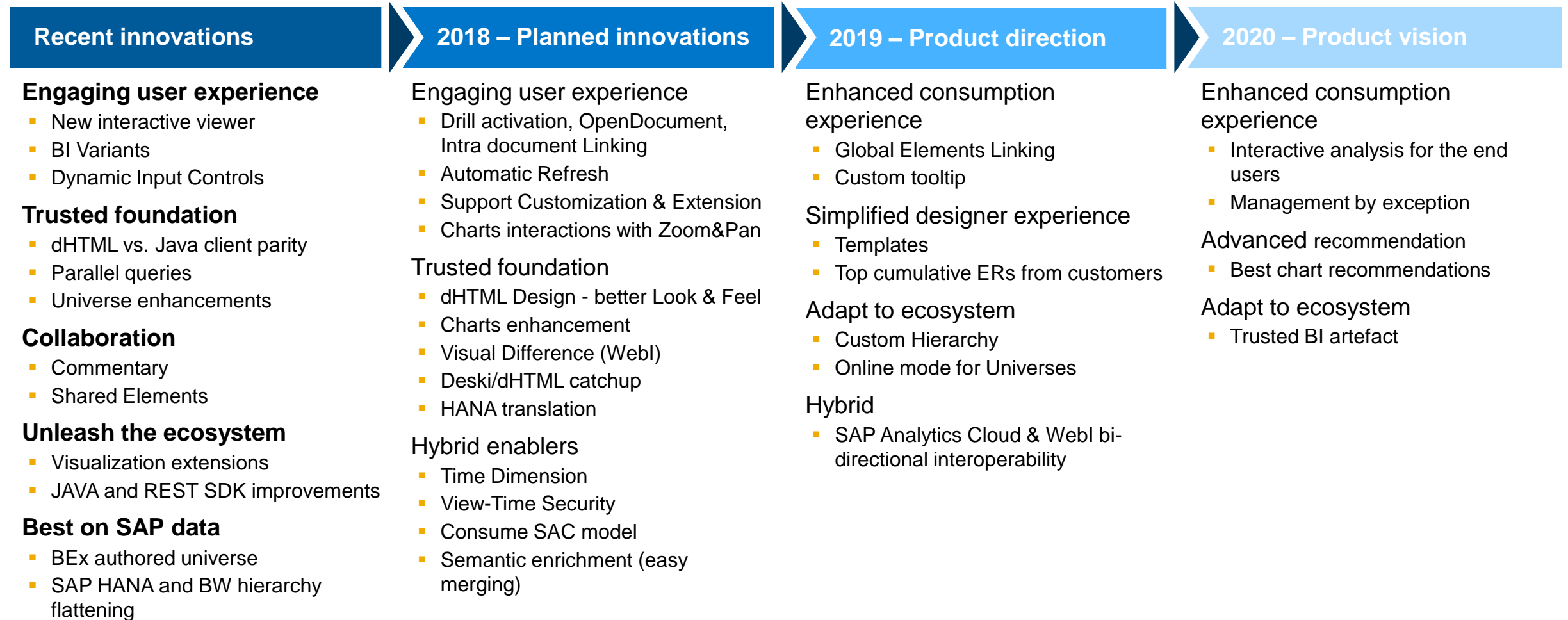
**SAP Labs
Preview**

- APIs for Time dimension
- APIs for Geo dimension
- APIs for Text and CSV files as data source
- API to get all available objects
- API to get/set data provider's Refreshable parameter
- Etc.

This is the current state of planning and may be changed by SAP at any time.

SAP BusinessObjects Web Intelligence

Product road map overview - key themes and capabilities



BI4.2 SP05

This is the current state of planning and may be changed by SAP at any time.



#Webi4Me

< Developers / Business >



Community



[Available to download:](#)

- Presentation of today



[#Webi4Me](#)



Webinar
every 2 months

10 Steps to Upgrade to SAP BusinessObjects BI4.2



80%
Time savings



Cost efficiency



Optimized migration

10 Steps to Successfully Migrate Business Objects to the Cloud



Time savings



Cost efficiency



Optimized migration



with  360 Scan

360Suite

 <https://www.youtube.com/c/360Suite>

 bruno.masek@360suite.io

 @360suite

Gregory Botticchio

Product Manager,
SAP BusinessObjects Web Intelligence

 Gregory.botticchio@sap.com

 @gbotticchio

Upcoming 30min Webinars

April 18

Business Objects
Service Pack Upgrade

- [USA: 11:00am EDT](#)
- [UK: 11:00am GMT](#)
- [FR: 2:00pm CET](#)



April 19

Business Objects
Cloud Migration
(AWS, AZURE, SAP, etc.)

- [USA: 11:00am EDT](#)
- [UK: 11:00am GMT](#)
- [FR: 2:00pm CET](#)

Thank you!



[Request a free trial!](#)